

thrive

SPRING 2026



PEACE ARCH HOSPITAL + COMMUNITY HEALTH FOUNDATION



CELEBRATING CHINESE NEW YEAR

A REFRESHMENT CART BRINGS COMFORT TO ER PATIENTS

THE 2025 DONOR LISTING

ED AND JOHANNA KAMPSCHUUR

Longtime donors with a deeply personal connection to supporting food service at Peace Arch Hospital

MEET +

We are fortunate in our line of work that inspiring stories are never in short supply. Whether it's new donor-funded equipment improving care for our patients, or the complete transformation of a hospital unit, like the Surgical or Emergency Departments, made possible through a major fundraising campaign, we see every day how generosity changes lives. Sometimes, it's as simple and powerful as a grateful patient sharing their experience or hearing the many personal reasons why donors choose to give. These moments are always heartwarming and serve as a meaningful reminder of why this work matters so deeply to our community.

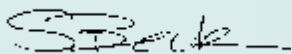
You'll read about one of those stories on page 8 in this issue of Thrive, as we introduce you to Ed and Johanna Kampschuur, longtime donors with a passion for nutrition and healthy eating. Their extraordinary gift to our **Healing Starts Here** campaign for a new production kitchen was inspired by deeply personal reasons. We think you'll find their story as inspiring as we do.

Speaking of inspiration, our Youth in Action members launched an innovative fundraiser for Peace Arch just after New Year's. Undeterred by a relentless rainstorm, they collected more than 15,000 bottles from across the community, raising an impressive \$6,500, all with remarkable enthusiasm and spirit. We couldn't be prouder of the young people involved in this program. You can read more about their efforts on page 4.

Finally, as spring unfolds around us, we find ourselves looking ahead with a renewed sense of possibility. Gardens are beginning to bloom, fresh leaves return to the trees, and longer, warmer days are on the horizon. It's a season that reminds us of growth, resilience, and the impact we can have when we come together, something we see reflected in our donors and community every day.



Neil Yarmoshuk
Board Chair



Stephanie Beck
Chief Executive Officer





**PEACE ARCH
HOSPITAL +
COMMUNITY HEALTH
FOUNDATION**

**15521 Russell Avenue
White Rock, BC V4B 2R4
T 604.535.4520**

**f i j peacearchfoundation
pahfoundation.ca**

2024-2025 BOARD OF DIRECTORS

- Neil Yarmoshuk — Chair
- Grace Cleveland — Vice-Chair
- Todd Antifaev — 2nd Vice-Chair
- Grant Turnbull — Past Chair
- Shane King — Treasurer/Secretary
- Stephanie Beck — Staff
- Jeff Borkowski
- Marco Buccini
- Amy Duncan
- Dr. Jerrod Hendry
- Cici Liang
- Rick Mann
- Mindy Salh
- Lynne Sinclair

APPOINTED REPRESENTATIVES

- Dr. Gursimar (Simar) Sidhu-Gill — PAH Medical Staff
- Dr. Tahmeena Ali — PAH Medical Staff

HONOURARY PAST BOARD MEMBERS

- Graham Cameron
- Bob Cooper
- Vincent Coyne
- Gus da Roza
- Geoff Funke
- Kim Karras
- Jane Manning
- Art Reitmayer
- Dragana Sanderson
- Al Schill
- Ellen Kennett (Aug 17, 1929 - Oct 2, 2022)
- In Loving Memory

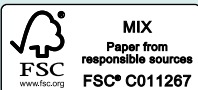
thrive

Published by:
Peace Arch Hospital +
Community Health Foundation

Managing Editor + Writer:
Vicki Brydon
Director, Public Relations

Feature Writers:
Samara Mizrachi Currim
Chloe Grondin

Graphic Design:
KA Creative Inc.



CONTENTS

SPRING 2026

4 YOUTH IN ACTION

A youth-led fundraiser raises \$6,500 for Foundry South Surrey-White Rock.

12 FOUNDATION SPOTLIGHT

A Q&A with CEO Stephanie Beck.

6 OUR THRIVING COMMUNITY

Move for Life builds a strong foundation for elementary school kids.

14 COMMUNITY EVENTS

Celebrating the Year of the Horse.

7 RAISING FUNDS

Our generous community comes together to support their hospital.

15 A CLEARER FUTURE

New MRI and Gamma Camera arriving at Peace Arch Hospital.

8 FEATURE STORY

Ed and Johanna Kampschuur make an extraordinary gift for a deeply personal reason.

16 HEALTHCARE INNOVATION

A donor-funded refreshment cart rolls into the ER.

18 THE 2025 DONOR LISTING

Thank you to our 2025 donors!



MAKING EVERY BOTTLE COUNT

1st ANNUAL BOTTLE DRIVE

What an inspiring show of generosity and community spirit! On January 3, our Youth in Action members hosted their first-ever Christmas Bottle Drive in support of **Foundry South Surrey-White Rock**. Even on a rainy winter day, these passionate young leaders showed up determined to raise funds to help make a difference for local youth.

From 11:00am-2:00pm, members of the community came to the ER parking lot to drop off bottles, make donations, and show their support for this youth-led initiative. Despite the wet weather, Youth in Action members persevered with incredible enthusiasm, driving around the community for four hours to pick up donations door to door. Their dedication played a key role in making this event such a success!

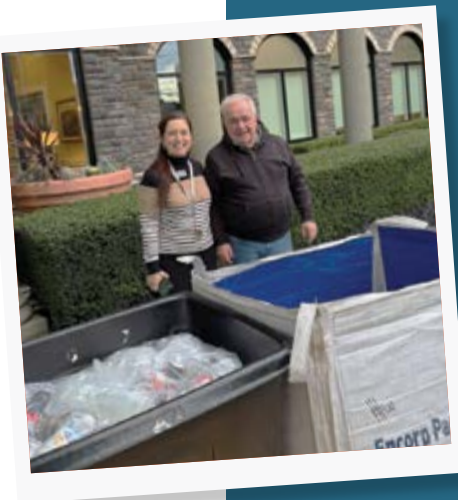


DID YOU KNOW YOU CAN SUPPORT PAHCHF WITH YOUR BOTTLE REFUNDS?

Scan the QR code or visit app.return-it.ca/peacearchhospitalfoundation to use our Return-It referral link and make a lasting impact today!



“I’m incredibly proud of our Youth in Action members for the enthusiasm and leadership they showed through this event. Despite the unpredictable weather, they stepped up and went out into the community to raise funds for Foundry South Surrey-White Rock, a vital wellness service that will support them and their peers. Seeing these young leaders give back and make a meaningful impact in their community is truly inspiring!”



- Amy Cross, Community Partnerships Manager, Peace Arch Hospital + Community Health Foundation (PAHCHF)

A huge thank you to Polygon Homes who matched all funds raised up to \$5,000 on event day, ensuring twice as many youth in our community will receive the wellness services they deserve. We are also incredibly grateful to the retirement residences Oceana Parc, Amica White Rock, and Aspira Retirement Living for their outstanding contributions, which played a significant role in the success of this bottle drive.

Thanks to the collective generosity of our community, we collected more than 15,000 bottles and raised \$6,500 in support of Foundry South Surrey-White Rock.

We’re so proud of our Youth in Action members for leading this initiative with passion and resilience, and we appreciate everyone who supported this event through bottle donations. Together, we turned post-holiday bottles into meaningful support for youth services in our community!

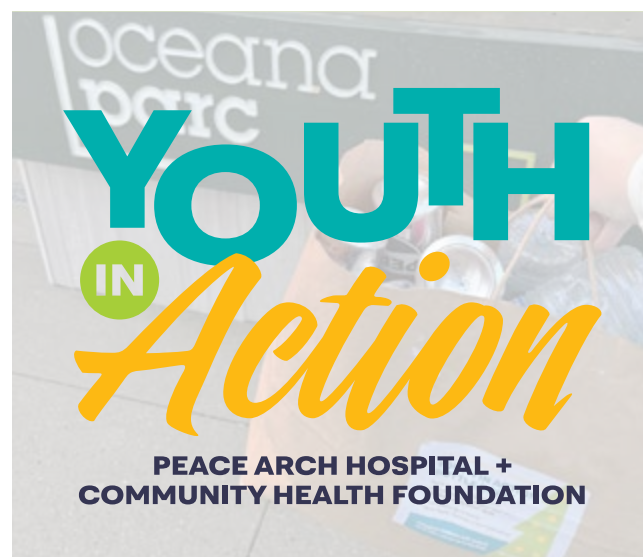


Foundry South Surrey-White Rock is a purpose-built, youth-centred space offering integrated health and wellness services under one roof. Located just steps away from Peace Arch Hospital, the space will grant youth aged 12-24 and their families easier access to mental health

and substance use support, physical and sexual healthcare access, peer support, and social service programs right here in our community. Youth In Action’s wonderful community fundraiser brings us one step closer to providing these essential services in our community.

INTERESTED IN JOINING OUR YOUTH IN ACTION PROGRAM?

Applications for the 2026/27 program are open now until May 31, 2026! Learn more and submit your application at pahfoundation.ca/youth





Building Strong

Foundations

Positive Update on Move For Life's Physical Literacy Program

PAHCHF is proud to support programs that promote lifelong health and wellness, especially for youth in our community. That's why we're proud of our longstanding support of **Move for Life (MFL)**, a program dedicated to improving the health and well-being of Canadians. Through its innovative Physical Literacy for Communities initiative, MFL brings together community leaders across education, recreation, sport, and health to help youth and adults build the skills and confidence they need to lead active lives.

For the past four years, MFL has equipped elementary school staff with practical tools for teaching movement, physical education, sport, curriculum planning, and physical literacy. During the 2024/25 school year, this program provided professional development opportunities to 126 elementary school teachers across multiple schools in the South Surrey area, strengthening their ability to deliver inclusive, engaging physical education experiences for students of all abilities.

Teachers valued the opportunity to observe experienced instructors in action, gaining practical

strategies for lesson planning, classroom management, and breaking down movement skills step by step to ensure every student can participate. The program also introduced a wide variety of adaptable games that could be used in different spaces and modified for varying skill sets.

Participants shared the positive impact the program has had on their teaching, noting that it enhanced what they were already doing while aligning closely with curriculum goals. As a result, students are more likely to feel included and confident in physical education classes, which is an important step toward maintaining active lifestyles in the future. When youth know how to move their bodies, they are more likely to move more often. And when teachers are empowered to create confident, inclusive learning environments for students, magic happens.

By investing in physical literacy at the classroom level, MFL is helping ensure more children have positive early experiences with movement and laying the foundation for healthier, more active lives from an early age.

Raising Funds



importance of public speaking while also celebrating our amazing community. Thanks to event-day and external donations, \$500 was raised for our **Healing Starts Here** campaign! Christine and Joy hope to make this an annual event, and we're so grateful for their passion and commitment to making a difference.

Finding Their Voice For Our Community

On February 1, U-Top Institute hosted an inspiring speech competition for students aged 8-17 years old from schools across our community. Led by U-Top's co-founders Christine Zhang and Joy Zhou, this incredible event highlighted the



launched the event in 2000. Since its inception, this fundraiser has contributed an incredible \$73,948 from refreshment sales to support PAHCHF. Thank you to Ocean Park Ford and the dedicated staff and volunteers who keep this meaningful tradition running strong year after year!

Revvng Up for Cardiac Care

Ocean Park Ford put the pedal to the metal for a great cause at their September 13, 2025 Hot Rod Show. This annual community fundraiser raised \$3,546 for Peace Arch Hospital's Cardiac Services clinic in memory of the late Ron Ford, who



woven into every stitch, raising a generous \$1,000 for our **Healing Starts Here** campaign. Thank you, Chartwell Knitting Group, for helping us build a healthier tomorrow, one handmade piece at a time!

Stitching Together Support

The Chartwell Knitting Group proved that generosity never goes out of style! Meeting weekly to knit, quilt, and crochet, this talented group sells their handmade creations at local fairs to give back to our community. Their creativity and care are

THE KAMPSCHUURS



Healing

STARTS
HERE

At PAHCHF, we know that a patient's healing journey is supported not only by the excellent medical care they receive at our hospital, but also by the nourishment they receive. As part of our commitment to delivering the highest quality of care, we have

embarked on a transformative renovation of our existing "retherm" kitchen to turn it into a state-of-the-art production kitchen where fresh food is prepared from scratch for every meal. This initiative is designed to modernize our outdated kitchen facilities, elevate food services, and enhance the dining experience for patients, visitors, and staff alike.

The construction of this new kitchen and cafeteria is happening now! We expect our Red Seal chefs to start rolling out the menu this Fall. The grand opening and full roll out of this project will be in early 2027.



Every strong community is like a good recipe. Ingredients are gathered from different backgrounds and blended together through shared experiences, generosity, and care for one another.

At Peace Arch Hospital, we see these ingredients folded together every day: in the patients we treat, in the staff who care for them, and soon, in the fresh meals that will be prepared in our new production kitchen.

Food has the power to bring people together. It carries memories from around the globe, connects generations, and can make an unfamiliar place – like a hospital bed – feel like home. For local philanthropic couple Ed and Johanna Kampschuur, the idea of nourishing a community resonates deeply and inspired them to make a remarkable **\$2 million gift to the *Healing Starts Here* campaign** for a new production kitchen and upgraded food services at Peace Arch Hospital.

For Ed, part of the inspiration behind their gift comes from his childhood. His father was a physician in the Dutch Army. He was originally stationed in a remote area of Indonesia where there was no running water or big cities, only military bases along the river. A boat came down the river with food and supplies only once every two weeks!

After receiving a promotion, Ed's father moved the family to Java and soon was running a medical clinic out of their home. When Ed was 8 years old, Japan invaded Indonesia and the family was forced into prison camps where they were fed meager rations. Food was limited to small amounts, and his family survived by learning to live off the land. He was good with a slingshot, so he could shoot pigeons and other small animals to eat.

“Not only were we hungry, we were also underfed”

– Ed Kampschuur

Ed knows firsthand what it is like to not have food or money at a critical point in his life but has carried the lessons of resilience and self-sufficiency he learned in childhood to his home today in our community. He and Johanna maintain a garden together at their home. Johanna lovingly tends most of the garden these days, while Ed enjoys spending time there when the weather is warm.

The Kampschuurs understand how important nutritional food is to maintain excellent quality of life, as evidenced by their commitment to eating a healthy diet. The development of this new production kitchen is important to them because both have eaten food from the retherm kitchen themselves. They have also seen friends

refuse retherm food at the hospital because of how unappealing it was. “The improved food system in the hospital will be advantageous for patients and their quick recovery,” Ed says.

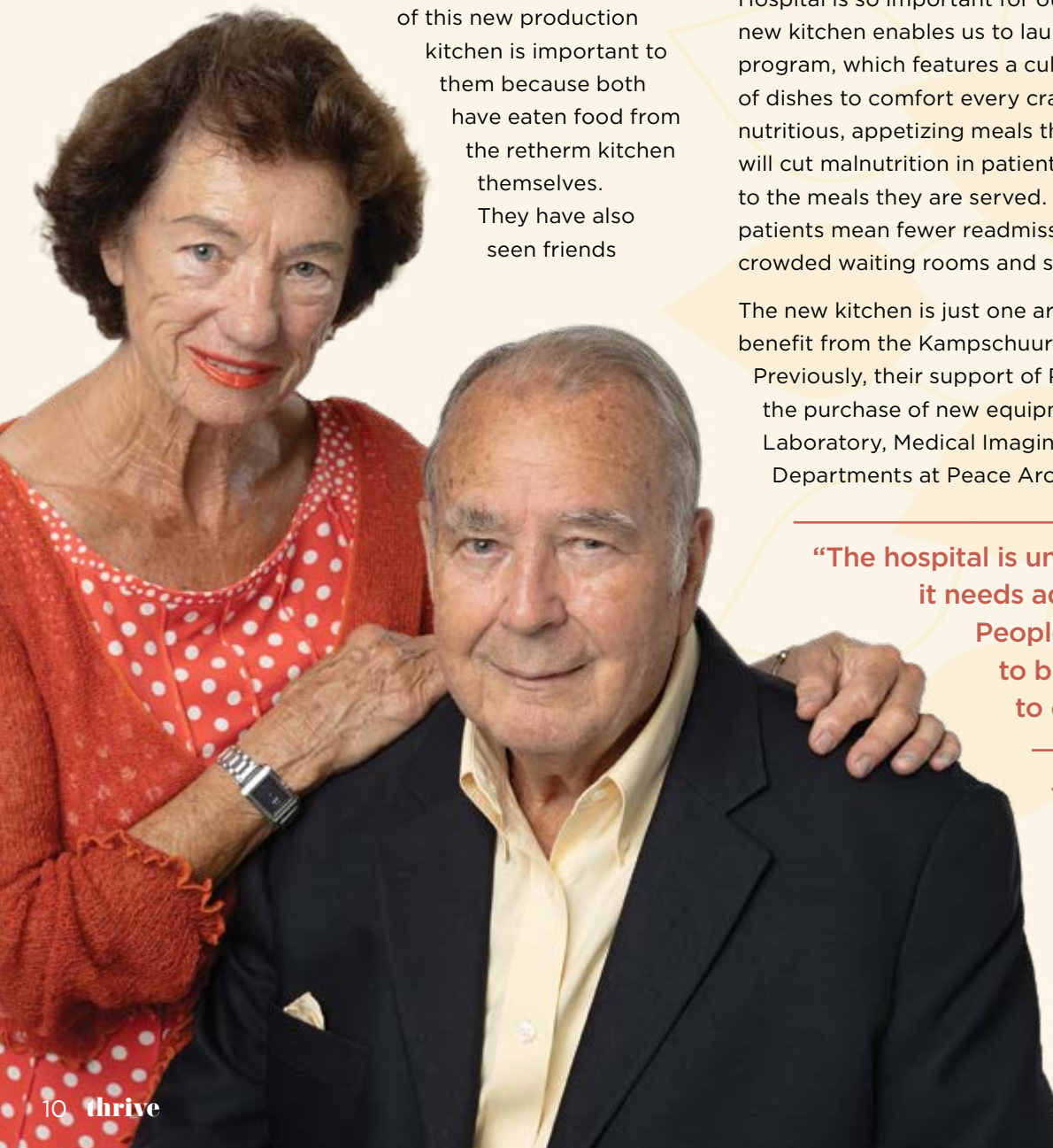
And he’s right; the proof is in the pudding: 45% of patients admitted to hospitals across Canada are already malnourished, and malnourished patients reportedly stay at the hospital 53% longer. Moreover, 25% of malnourished patients require readmission to a healthcare facility after being discharged.

That’s why a production kitchen at Peace Arch Hospital is so important for our community. The new kitchen enables us to launch our Choice Dining program, which features a culturally diverse selection of dishes to comfort every craving. Having fresh, nutritious, appetizing meals that suit every palette will cut malnutrition in patients as they look forward to the meals they are served. Fewer malnourished patients mean fewer readmissions, leading to less crowded waiting rooms and shorter wait times.

The new kitchen is just one area of the hospital to benefit from the Kampschuurs’ incredible generosity. Previously, their support of PAHCHF has enabled the purchase of new equipment for the Outpatient Laboratory, Medical Imaging, and Operating Departments at Peace Arch Hospital.

“The hospital is understaffed, and it needs additional funding. People like us are happy to be able to give back to our community”

**- Ed and Johanna
Kampschuur**





Their unwavering commitment to the wellbeing of our community takes a unique form, setting an inspiring example for philanthropy. Utilizing a tax-smart approach, the Kampschuurs support our hospital with gifts of appreciated shares, a testament to their generosity and resourcefulness.

For Ed and Johanna Kampschuur, giving back isn't about the financial strategy or recognition. It's about contributing something meaningful to the place they call home. Early next year, the production kitchen comes to life ready to serve fresh, made-on-site food that restores health, improves recovery times, and sustains the doctors, nurses, and staff who care for all of us.

Like any good recipe, building a healthy community takes the right ingredients: compassion, resilience, generosity, and care. Thanks to the Kampschuurs,



those ingredients are coming together. They're helping ensure that every patient at Peace Arch Hospital receives not only the care they need, but also the nourishment that helps them heal.

Stephanie Beck



Q. How did Peace Arch Hospital + Community Health Foundation come to be?

A. Peace Arch Hospital opened its doors in 1954 with just 45 beds, five physicians, and 10 nurses. As the community grew, so did the need for expanded health care facilities and in 1988, Peace Arch Hospital + Community Health Foundation was established to support the hospital's growth with fundraising campaigns and other donor initiatives. Since then, the Foundation has raised nearly \$300 million for capital campaigns, hospital upgrades, medical equipment, and community health projects.

Q. What led you into the field of fundraising?

A. I've been a professional fundraiser my entire career, starting in the arts where I learned how powerful community support can be when people feel emotionally connected to a cause. That experience shaped how I think about philanthropy; it is really about relationships, storytelling, and trust. Moving into healthcare felt like a natural next step, as it allowed me to apply those same principles in a space where the impact is immediate, tangible, and deeply meaningful. At its core, the work is still about people coming together to make something better, just with higher stakes and even stronger purpose.

Q. What makes Peace Arch Hospital + Community Health Foundation different from other hospital foundations?

A. We were one of the first hospital foundations in Canada to prioritize community health programs along with supporting the acute care needs of a hospital. This means that not only do we fund new and up-to-date medical equipment, hospital expansions, and upgrades, but we also support an upstream approach to health care with projects and initiatives that help keep people out of the hospital, like chronic disease management, physical literacy, and nutrition education. This eases congestion in our busy ER and on the health care system as a whole, and promotes a better quality of life for our community members. As trailblazers for this upstream approach to health care, we are excited to see other hospital foundations across Canada follow suit.

Q. What motivates you to come into work every day?

A. The impact is real and immediate. Every dollar raised turns into better care, better spaces, and better outcomes for people in our community, often at the moments when they need it most. That connection between generosity and tangible change never gets old. What keeps me motivated is the people. The donors who give because they are grateful, the clinicians who advocate so fiercely for their patients, and the staff and volunteers who show up every day believing things can be better. I get to sit at the intersection of compassion and action, and that is a pretty powerful place to be.

Q. What do most people *not* know about the Foundation that they would find interesting?

A. In addition to our focus on community health, I think the fact that we have raised nearly \$300 million over the last 38 years is a true testament to the extraordinary generosity that exists in White Rock and South Surrey. It was the community, back in the late 1940s, that raised the initial \$150,000 required by the BC government to build Peace Arch Hospital, and it is the community today that continues their steadfast support, allowing us to make tangible change in health care. Donor dollars are at work every day making a real impact for every patient that walks through the doors at Peace Arch.

Q. What are your goals for 2026 and beyond?

A. Our next fundraising priority is the Intensive Care Unit (ICU) and Cardiac Monitoring Unit, which needs a complete overhaul and expansion to continue to support our most vulnerable patients. Technology has evolved so much over the last 40 years, and we need to upgrade our space and facilities to utilize that incredibly advanced equipment. That will not only help provide the best treatment for patients, but also support medical staff in doing their best work. An updated and modern ICU also attracts top physicians and specialists who want to work with the latest technology. We would also like to continue to move the needle when it comes to community health and truly help our community be the healthiest possible.

Q. How do you hope to achieve those goals?

A. We will continue to engage our donors with projects that are meaningful to them, knowing that our track

record for producing results is exemplary. Our donors are confident that their gifts go directly to their intended purpose, and they see the impact at Peace Arch: whether that's the new ER, a new residential care and hospice facility, or the \$10 million in medical imaging upgrades that Peace Arch just received, courtesy of our generous and caring community.





CELEBRATING THE YEAR OF THE HORSE AT OUR ANNUAL

Chinese New Year Event



On February 6, PAHCHF welcomed the Year of the Horse at our annual Chinese New Year celebration at Mingyan Seafood Restaurant. More than 70 valued members of our Asian community attended this exclusive gathering for an afternoon of connection, reflection, and celebration.

Chinese New Year is a time of renewal, prosperity, and unity. The Year of the **Fire Horse** symbolizes energy and action—qualities that reflect our Foundation’s spirit and the leadership of our Chinese community, whose ongoing support continues to strengthen healthcare in White Rock and South Surrey.

Guests enjoyed a traditional banquet and festive photo booth while connecting with fellow supporters committed to advancing care at Peace Arch Hospital and beyond.

Cici Liang, Foundation Board Member and Leader of our Foundation’s Asian Committee, reflected on the Asian Committee’s accomplishments over the past three years.

Dr. Jane Wu, Internal Medicine Physician at Peace Arch Hospital, spoke about the vital role Peace Arch Hospital plays in our community and the impact of every person’s support.

Stephanie Beck, CEO of PAHCHF, shared the history of Peace Arch Hospital and highlighted our Healthy Community Grant Program, guided by our mission to create the healthiest community possible.

Events like this remind us that meaningful progress happens when community comes together with purpose. We are deeply grateful for the leadership and generosity of our Chinese community as we move forward in the Year of the Horse.



TO LEARN MORE



Interested in joining our Asian Committee?
Contact Wenjing Zhu at wenjing@pahfoundation.ca to learn more



A CLEARER FUTURE

NEW MRI AND GAMMA CAMERA ARRIVING AT PEACE ARCH HOSPITAL

The final two pieces of equipment funded through our IMAGINE campaign are set to arrive at Peace Arch Hospital this year, marking an exciting milestone for our community!

In April, a mobile MRI unit will be installed on site and will operate for approximately six months. This temporary solution ensures that patients continue to have access to critical diagnostic imaging services while construction is underway for our brand-new, permanent MRI suite. The installation of the new MRI is expected to be completed by the end of the year! This state-of-the-art equipment will serve 5-10% more patients than our old unit with enhanced imaging capabilities.

In addition, a new Gamma Camera will be introduced to replace the hospital's current unit, which has been in service for nearly two decades. This upgrade will significantly improve diagnostic accuracy and efficiency in nuclear medicine. Construction related to the Gamma Camera installation is scheduled to begin in October 2026 and is anticipated to be completed by February 2027.

Together, these investments represent a major step forward in delivering high-quality, modern care to our growing community.



Imagine
the possibilities...

the café express

A new refreshment cart has rolled into the building! In December 2025, in partnership with PAH Volunteer Resources, we introduced the *Café Express* cart in Peace Arch Hospital's Emergency Department, offering complimentary, nutritious snacks and drinks to help nourish patients during wait times.

PAH's ER sees an average of 165 patients every day, which unfortunately can mean long wait times of up to several hours for some patients. It is impossible to predict how long you will have to wait because each individual patient's wait time depends on their level of acuity and what kind of tests and/or treatments are needed.



The *Café Express* cart is one of many ways our hospital strives to ensure our patients are comfortable and cared for. **The cart offers complimentary refreshments such as trail mix, fruit sauce pouches, salty snacks, water, coffee, and tea.** When appropriate for a patient's medical condition, both patients and their families can enjoy these offerings, providing nourishment and comfort during a stressful time. PAH staff have already noticed an overwhelming shift in the waiting room atmosphere on cart days, sharing that patients truly feel cared for and appreciated. "It's a whole new world in the ER since the cart started," said one PAH staff member. "It's creating a happier environment for staff and patients alike."





This cart wouldn't be possible without the commitment of PAH Volunteer Resources, who ensure there are smiling faces to bring the cart to life each day. Its popularity has been so strong that we've expanded the program to five days a week, allowing us to support even more patients and families in our ER waiting rooms. A huge thank you to everyone who has volunteered their time to support patients in such a vulnerable time.

We look forward to continuing to serve up snacks and support in our Emergency Department!



A special thank you to Neil & Karla Kerr for funding the first year of costs for this program! We're so grateful that you can help support patients in our ER in such a sweet way.

You can help bring refreshments to our ER! This cart is generously provided by PAHCHF and donations from community members like you. Scan the QR code or visit pahfoundation.ca/er-cart to learn more and donate today.



thank you

TO OUR GENEROUS 2025 DONORS!

This donor list recognizes individuals and organizations who supported Peace Arch Hospital Foundation between January 1 and December 31, 2025. Every effort has been made to ensure the accuracy of this list. If you notice an error, kindly contact the Foundation at 604.535.4520.

\$2,000,000+

Ed & Johanna Kampschuur

\$250,000 - \$499,999

Denis and Yvonne Blakely Trust
Peace Arch Hospital Auxiliary Society
Al & Wendy Schill Foundation
Mark Woodall & Judy McKague

\$100,000 - \$249,999

Anonymous (6)
Gordon & Cheryl Barefoot
Wendy Borsuk & Jacob Bergen
Xudong Liu & Donna Dong
Elaine Godwin
James & Kathleen Gowans
Werner & Helga Höing Foundation
Neil & Karla Kerr
Gary & Anne McPhail
George & Sylvia Melville
Surrey Fire Fighters Charitable Society
Barbara Sweeney
eurOptimum display Inc.
White Rock Fire Fighters Charity Association

\$25,000 - \$99,999

Anonymous (8)
Donna Balfour
Dieter Beer
John & Gillian Bertamini
Janice & Gerlando Bruno
Gerald W. & Lorraine Burns
Randy & Janice Butchard
Janis Clark
Jim & Joan Cosford
Courtlands Charitable Foundation

Crown Contracting
Drive for the Cure Foundation
Jerry & Jackie Dugger
Duradek Canada Ltd.
Peter & Donna-Jean Harco
Dave Hiscocks & Margaret Otte
Jensen Foundation, The
Mile Jovanovic & Carol Heatley
Marianne Koch
Ted & Caroline Les
Steve & Karen McDonald
Susan Mueller
John Lee & Heidi Neufeld-Lee
South Surrey Badminton Society
Tim Hortons - Nomis Food Services Inc.
Art & Judy Trojan
True Directions Charitable Foundation
Richard von Hehn
Mr. & Mrs. P.A. Woodward's Foundation
Neil & Lisa Yarmoshuk

\$10,000 - \$24,999

Anonymous (3)
Ronald Amos
Stephanie Beck
Sharon Berry Foundation
Weldon & Rosemarie Bouchelle
Monika Butt
Dennis J. Capstick
Malkiat Cheema
Don & Josie Dorazio
June Dubay
David & Patricia Edwards
Fiera Capital Corporation
Anna & Arnold Glasel
Bev & Helen Hadley

Harald & Heidi Hendess
Dr. Brenda J. Horner
Howe's Market
Milan & Maureen Ilich Foundation
Industrial Alliance
Patty's Family Foundation
Dr. Charles King & Wendy Wulff
Alice Kozier
Jack Last & Shannon Parker
Dr. C.W. Lee Inc.
Danny & Am Lidder
Randy & Monica Lowe
Ian W. & Gail MacKenzie
Rick & Azra Mann
Robert Ogilvie
Dr. Barbara M. Olson
Dale & Kym Parsons
Lynne Pitts-Dawes
Polygon Homes Ltd.
Joe & Helga Pusch
Bert & Greta Quartermaine Family Fund
Art & Marjorie Reitmayer
Ed & Sheila Sampson
Semiahmoo Shopping Centre
Drs. Bruce McCaig & Melanie Sherk
Lynne Sinclair
Sonja Taylor
Grant & Michelle Turnbull
Tibor Tusnady
Scott & Sheryl Ullrich
James B. Wallace Foundation
Wanda Irene Webb
Drs. Christopher Kit & Carol Wong
Yongjun Ba & Dicun Zhao

\$1,000 - \$9,999

Anonymous (9)
Ed & Beverley Ackerman
Albatross Veterinary Services Ltd.
Rolf Alberti
Emmanuel & Rocio Aligizakis
Stanley Alldritt
Angel Care Dental
Appolonia Heit Charitable Giving
Al & Debbie Arbuthnot
Trevor Smith & Dionne Archer-Smith
Gwen Arnold
Elizabeth Bain
Hardy Bains
Douglas G. Baker
Sheena Ball
Myles Ballendine
David & Jeannette Banta
Paul & Dianne Barber
Richard & Elizabeth Barley
Tom Barnett
Denise Bayer
Peter & Margaret Bendiksen
John Benesh
Larry & Sherrill Berg
Hermann & Carol Bessert
Chris & Nenne Bicknell
William Blake
Sheron L. Blewett
Jean M. Boehme
Louisa Bomben
Bachitter & Kamaljit Boparai
Jeffory Borkowski
Barrie & Joan Boulton
Isabel Streight
Peter Boychuk
Judy Brandon

| | | | |
|----------------------------------------|----------------------------------------|-------------------------------------------------------------|------------------------------------------|
| Richard Brinkert | Yalin Dai | Gurmeet Grewal | Winnifred Kowalewch |
| James & Dani Brown | Carol De Boeck | Wayne & Arlene Groome | Reinold & Kimberly Krahn |
| Janet Brown | Lance & Lorene De Silva | Jun Gu & Wei He | Gerhard & Rita Krause |
| Linda Bryan | Marilyn Desmarais | Geoffrey Gudewill | Brenda Krumhardt |
| Dr. Hal Bunting | Corinne Dingwall | Gurdwara Sahib Brookside | Frances La Roue |
| Richard & Lorna Bury | Brenda Dobell | Matt & Kim Handley | Lark Group |
| Butterley Family Foundation | Rob Donaldson | Harding Forklift Services Ltd. | Edward J. Lasko |
| Mic Cagnoni | Peter & Candace Donaldson | Christine H. Hari | Laura's Coffee Corner Inc. |
| Graham & Darlene Cameron Foundation | R. Paul & Sue Douglas | Elizabeth Harrison | Lavish Liquid Catering Ltd. |
| Diane Carter | Hao Du & Xiang Tong | Mounir Hassan & Fatemah Cyr | Pat Lawson |
| Stephanie Catap | Marion Dyck | Henk & Fran Havinga | Dr. Martin Lebl |
| CD Nova Ltd. | Rachel Dyck | Dr. T. Helou | Ronald Lee |
| Gin-Kway Chang | Eagle Side Construction Ltd. | Peter & Sylvia Hemmes | Ross Leeder |
| Dr. Edward Chang | Bruce & Rosemary Eddie | Scott & Shannon Higgins | Maurice & Erma Lees |
| Dan Chapotelle | Thomas Robinson & Wendy Edgar | Bruce & Eunice Higgs | Robert & Susan Legault |
| Tim & Christina Charles | Douglas & Jo-Anne Ellenor | Trevor & Sheri Hildebrand | Leighton Lydiard Charitable Gift Fund |
| Tianjun Chen & Yichun Xu | Tazdin Esmail | Barton & Gillian Hildebrand | Cheryl A. Lemire |
| Michael Y. C. & Myrna Chen | Penny Essex | Yung Tao Ho | Phill & Sandi LeQuesne |
| Xiang Yang & Jige Chen | Evergreen Agar Foundation | Sherry Hoff | Carolyn Leslie |
| Wayne & Corenia Chester | Dr. Murray & Janice Fain | Joan & Norman Hawker | Linda Leslie |
| Kymar Gutters Inc. | Patricia Farina | Dave & Leanne Howard | Patti Leverton |
| Donna Chidlow | Fiona Fearon | Nancy Hunter | Matthew & Lisa Lewis |
| Curtis Christopherson | Douglas Feltis | Innovative Fitness - White Rock Cant-Jackson Giving Fund | Nancy Lewis |
| Buchanan Programme & Grace Chua | Ruixin Feng | John Jans | Li Li |
| Chubb Insurance Company of Canada | Brenda & Timothy Ferris | Ebe Jansen | Jack Li & Joyce Lin |
| Robert Clark | Fidelity Investments Canada ULC | Judy Jaques | Jerry Li & Cindy Yu |
| Dr. Ronald & Heather Clarke | Catherine Fifik | Hong Jiang | Jinjing Cici Liang |
| Grace Cleveland | Kirk & Daniela Fisher | Vilma Joaquin | Li-Leger Family, The |
| Robert & Gerda Clifford | Dr. Jason & Sara Francoeur | Doug Johnson | Gale Lindenthaler |
| Carol Cluff | John Hitchcock & Judy Freeman | Shirle Johnston | Barbara Linney |
| COBS Bread - Semiahmoo | Al & Donna Freeze | Patricia Johnston | Xiaohua Liu |
| K. Coil | Robert & Patricia Friedrich | Kenneth J. E. & Sharon Jones | Margaret Long |
| Ronald & Wendy Collingwood | Debra Friendly | Glen & Deanna Jones | Murray Longley |
| Dr. Andrew Collins | Robert Friesen | Jones Lang Lasalle Real Estate Services | Donald & Stella Longstaff |
| Gino & Shirley Conte | Janice Friesen | Bruce & Margaret Joyce | Robert & Jacquie Loughheed |
| Randy & Gail Cooper | Taylor & Danica Gallaher | Sean Joyce | Doris Luking |
| Bob & Carolyn Cooper | Stanley Galvon | Yuchi Kang | Lysander Fund Ltd. |
| Charlaine Corbett | Douglas K. Garland | Lyle and June Karasick Foundation | Parker & Barbara MacCarthy |
| Dr. Stephen & Elizabeth Coret | Dr. Quinn Gentles | Hiroko Kean | Betty MacDonald |
| Jack & Joan Creasy | Dr. Grant & Beryl Gibbings | Renee Kennedy | Bob Mack |
| Drs. Daniel & Stephanie Crompton | Eric Giesbrecht & Astrid Neumann | Kennedy Duncan Foundation | Alec & Marlene MacKenzie |
| Cuneo Gilbert & LaDuca LLP | Stan & Nancy Gieschen | Resurreccion Kilayko | Barbara Maguire |
| Rev. Sue Foley-Currie | Carolyn Glazier | Shane & Carolyn King | Ed & Susan Malysa |
| Charles & Wendy Curteis | Leona Gom | Marc Kinna | Ian & Terri Mankey |
| Heike Czisch | Dr. Howard & Andrea Green | Tom & Marylou Kirstein | Daniel & Dorothy Manulak |
| Kevin & Heather Dagenais | DesLauriers Chiropractic Group Inc. | Attila & Lorilee Koltai | Kent & Colleen Martin |
| Roberta Dahl | William R. Greig | Koolen Consultants & Services Ltd. | Connie Massa |
| | Dave & Martha Greig | | Mawer Investment Management Ltd. |

DONOR LISTING

| | | | |
|-------------------------------------------|-------------------------------------|-------------------------------------------------|----------------------------------|
| Alice Maxymyshyn | Brandi Payne | Murray & Sandra Sereda | Garry Wahl |
| Richard & Marilyn McBryer | Peace Arch Stamp Club | Ken & Brenda Sewell | Annette Walker |
| Kathleen McClure | Gina Peng | David & Devre Sharpe | Sydney K. Leung & Maria Walsh |
| Glen & Lori McCrady | Trena Pepper | John Sherstone | Yanqun Wang |
| Donna McCredie | Nick & Ashley Peterson | Yun Shi | Geoff & Nicole Watson |
| Mark & Leslie McCue | Jim & Jill Phillips | Dr. Arnold & Kumi Sikhakhane | Alan & Lucille Webster |
| Kevin McFarland | PM GIGS Inc. | Dr. Sonia Singh Inc. | Michael Weiner & J. Leila Stuart |
| Andrew & Cheryl McFarland | Barbara Pope | Ladies In Power Podcast | Frank & Darlene Westen |
| Bradley & Kelly McIntosh | Nigel & Iva Potts | Shawn Smith Personal Real Estate Corporation | White Rock Mennonite Church |
| Gilbert McKay | Joan Pratt | Douglas & Barbara Smith | White Rock Pharmacy |
| Gerry & Lynn McKay | Dr. Bryan & Anne Prentice | Keith & Renee Solinsky | Whitecliff by Revera |
| Lorraine McLean | Tom & Stephanie Prokop | Eric & Elma G. Sommerfeld | Wayne & Janet Wilkie |
| Bruce McLean | Vladimir & Mary Ann Pylypchuk | Marya Sopova | John & Donna Williams |
| Gary & Donna Mertens | Julia F. Qiu | Bob Spires | Kent & Fay Williamson |
| Vic & Irene Michaluk | Ron & Greta Racanello | Stewart & Lynne Spurr | Dr. Cheryl Wilson |
| Microsoft | Kiran & Erin Rao | George & Patricia Stephen | Debbie Windover |
| Nick Milau | Sheshagiri & Wendy Rao | Stevested Machinery & Engineering Ltd. | Gene Wong |
| Barry & Ruth Miller | Abdul & Sam Rasheed | Blake & Linda Stewart | Benjamin & Cecilia Wong |
| Nancy Mingo | RBC South Surrey Community | Colin & Heather Stewart | Clark Woodland |
| Doreen M'Lot | Wendy Reid | Elvina A. Stewart | Dr. Jane Wu |
| Dr. Shiraz N. Mohamed | Milton Reinheimer | Edward & Marjorie Stock | Hui Mei Xiao |
| Ray Mohan | Dereck Renberg | Wenli Sun & Wenli Wang | Shirley Yarmoloy |
| Lynda Jean Moller | Douglas Riches | Yvette Symes | Yvonne's Fitness |
| Mike Montesano & Ann Mickelson | Rieding Projects Ltd. | Tacofino Restaurants | Paul & Anna Yoo |
| Drs. Santhoshan Moodliar & Mandhira Oriee | Mike & Joan Riley | Angela & John Taggart | Binghua Zhang & Jun Shen |
| Joh-Anna Mordhorst | Patricia Robertson | Drs. Peter Tsang & Mae Tam | Lei Zhang |
| Linda Morgan | Del & Georgina Robertson | Paul & Jeanie Tang | Lei Yang & Ling Zhang |
| Kathryn Morris | William & Norma Robertson | Jianlei Tang | Fang Lu & Wei Zhang |
| Thomas & Tonie Morrison | Richard & Anna Robinson | Chong Ze & Lilian Teh | |
| G. Morriss | Janet Rogers | Gary & Susan Telawsky | \$250 – \$999 |
| Brian & Margaret Murtsell | Myrna Rollingson | Tong and Geraldine Louie Family Foundation, The | Anonymous (6) |
| Alan & Shirley Nauss | Rotary Club of White Rock | Michael Thompson | Lynne Adams |
| Linda Nenninger | Dr. Connie J. Ruffo | Eleanor Thompson | Diane Adkins |
| John Newman | Rita Russell-Baker | Dr. Pamela Thornton | AGF Management Ltd. |
| Loan Nguyen | Safe Sweat | Don & Carline Tough | Wayne Albertson |
| Gene & Aline Nimetz | Slavica & Marijan Sakic | Nick & Carolina Trahan | Irene E. Albinet |
| Noble Youth Society | Kent & Dragana Sanderson | John Trca | John Albinet |
| North Surrey Lions Club | Harjit & Anna Sandhu | Dave Tredgett | Dr. Carolyn A.M. Allan |
| Ocean Park Automotive | William Sapphire & Dr. Michelle Liu | Sheila Triffo | Judith Allerston |
| Ocean Park Ford Sales Ltd. | Aman Sardana | Arie & Alice Trommel | Mike Ambler |
| John & Donna Ogilvie | Stacey Saumure | Jean Tsuyuki | Pamela Andrews |
| Michael Olifkey | Ron Car & Monica Schioldager-Car | Darren Turchansky | Harold & Gail Arens |
| Dr. Med & Julia Orfaly | H. Uwe & Edith L. Schnack | Ken & Carol Vance | Cindy Armstrong |
| Hilary Otten | Alison Schroeder | Vancouver Student Business Association | Joseph & Elizabeth Atkinson |
| McDonald's - P.K. Ram Family Restaurants | Erika Schulz | Ronald & Lena Vanderhelm | Kim Au |
| Annie Pallesen-Brown | David Schussler | Brendan Sainsbury & Dr. Elizabeth Varughese | Ancy Aziz |
| Julienne Parker | Steve & Loni Scott | | Andy & Jane Baak |
| Derek Patterson | A. M. & Ella Scrimgeour | | Walter Babbini |
| | | | Maryam Baghan Nazary |
| | | | Jean Baine |

| | | | |
|-----------------------------------|------------------------------------|--------------------------------|------------------------------------------|
| Rose Ball | Gina Bucchiotti | Alice Dalke | Rodney Fors |
| Johann Bank | Ronald & Marie Budd | Frances Davie | Louis & Daphne Fortin |
| Clarence & Stella Barber | Carolyn Burgess | Glyn Davies | Tony & Donna Gantly-Sparrow |
| Ian Barclay | Kathryn & Gregory Burns | Ron & Marilyn Davis | Robert Gardner |
| Taryn Bartels | Elfriede Bush | Dorthe Davison | Martin & Darlene Geiger |
| Lodovico & Franca Bassanese | Gordon Buttolph & Trudi Heard | Jennie Deagle | Georgian Square Dental |
| John & Mary Fran Bateman | Herbert & Arline Cahoon | Shirley Deane | Norbert Gerlach |
| Philip & Deborah Bates | Joan Campbell | Heather G. Denedy | Jagdish Singh Gill |
| David & Lorna Bauer | Colin Campbell | David Denroche | Pakhar Gill |
| Margaret Beck | Thomas Canale & Mariam Hanjra | Dianne Derksen-Green | Serena Gill |
| Keith & Elaine Becker | Villi & Margret Canavese | Maleksultan Dhanani | David J. Gingrich |
| Michael J. Beley & Kathryn Church | Thomas Button & Dr. Elizabeth Cant | Tek Dhillon | Erich & Doris Gnandt |
| Elaine Bell | Canwest Well Drilling Ltd. | Harloveleen Dhillon | Goldstone Developments Ltd. |
| Aldo & Susan Bender | Michael & Gabriela Carter | Kirandeep Kaur Dhillon | Joey Goncalves |
| Mary-Jean Bengough | Philip Cartwright | Sherrie Dick | Beverley Gordon |
| George Zukerman & Erika Bennedik | Peter Cass & Jocelyn Creigh-Cass | Dr. Frederic William Dobson | Terrie Goto |
| John & Sheila Bensley | Gabriel Celligoi | Georgia Docolas | Penny Graham |
| John & Laurel Berard | Janice Cervantes | Richard Dolny | Robert E. Gray Sr. |
| Christel Bernemann | Satish & Patricia Chadha | J. Stuart & Susan Donn | Hugh Green |
| Stephanie Beveridge | Chuang Mo Chang & Stephanie Wang | Guy Dorchester | Stan & Dawn Green |
| Robert Billington | Helen Chang | Matthew Dorval | Tom Greene |
| Filiz Fidan Bingoller | Anna Charalambides | Josephine Drzystek | Diane Grenier |
| Agnes Bioneda | Shinder Johal | Sarabjeet Dua | Douglas Burrows & Connie Grenier-Burrows |
| Jeannette Birchall | Faustina Chen | Heather Dubay | Jacqueline Gresko |
| Jack & Ann Marie Bishop | James Cherry | George H.S. Duddy | Robert & Linda Grimm |
| Jennifer Bishop | Dave Cherry | Greg Duly | Linda M. Gronert |
| Manish Bisht | Lynne Hing Yee Cheung | Janet Duncan | Lana Grymaloski |
| Paul & Jackie Blanchard | David & Sophia Chua | Mary Dyck | Joey Guo |
| Gertrud K. Blattmann | CIBC Asset Management Incorporated | Sandra Dyck | Arthur & Barbara Haddon |
| Mardy Block | City of White Rock | Mary-Ann Dyson | Devan & Elyse Hagardt |
| Maria Booth | Patrick & Audrey Clayton | Jonathan Eccleston | Jan Halliburton |
| Sylvia Bourque | Denis & Carmelle Clements | Edward Jones Investments | Wendy Hampton |
| Alison Braden | Richard Cleveland | Herman & Marianne Eggers | Karen Hampton |
| Linda Brandwood | Patricia Clutchey | William Emerton | Jiang Han |
| Patricia E. Branigan | Loretta Cody | Gerda Engelage | Don & Muriel Hanberg |
| Barbara Breaks | Norman Combs | Edward & Frieda Epp | J. Patrick Hanna |
| Caroline Brear | Cesarina Conte | Wally Escher | Keith Hanson |
| Paul Brennan | Irene Courville | Joseph Everett | Dr. Farhan Haque & Asma Farhan |
| Cathy Bridges | Cherie Couturier | Michael & Marilynne Diane Eyre | William & Francine Hardwick |
| Georgia Briggs | Wayne & Jeri Cox | Elham Fahimipour | Jared Harman |
| Ken Brookes | Charles Coy | Kenneth Fedyschen | Dr. Kasandra & Matthew Harriman |
| Douglas & Pamela Brown | Robert & Kathryn Crawford | Alexander & Milly Ferronato | Robert Hart |
| Kenneth & Marilyn Brown | Ken & Muriel Croft | Phillip Fielding | Wendy Hartford |
| Robert & Joan Brown | Valerie Cross | Angelo Finamore | Shannon Harvey-Renner |
| Helen Brown | Glen Culshaw | Dominic Fiore | Richard & Emily Hassell |
| Doreen C. Bruce | Mary Cunningham | William Fleener | Jane A. Hayes |
| Perry Bruce | Patricia Dairon | Susan Flesher | Shirley Hazzard |
| Dr. Vic & Dr. Carolyn Bubbar | | Elizabeth Floystrup | Anita Helser |
| | | David Ford | |
| | | Arthur & Ann Foreman | |

DONOR LISTING

| | | | |
|----------------------------------|-------------------------------|---------------------------------|---------------------------------------|
| Joan Henderson | Hidehiko & Barbara Kubo | Mourad & Sue Mankarios | Klaus & Carol Oehr |
| Carel Hendricks | Ron Kunstman | Margaret Mann | Sean & Amy O'Leary |
| William Hennessey | Michael Kunyk | Blair & Diane Manuel | Justin Oliver |
| Peter & Judy Henriques | Steve Kwok | Manulife Financial | Jim & Susan Olsen |
| Csaba Hezsely | Chris LaBorde | Medielyn Marinas | John & Norma R. Olsen |
| Eileen Hiebert | Marilyn Lacate | Joan Marleau | Florence O'Neill |
| Cindy Hildenbrandt | Eun-Sook Lam | David & Nancy Martin | Margaret Orpen |
| Gerald Hirsch | Louis Lau | Christian Martin | Sandra Osborne |
| Fritz Hockemeyer | Brett Lauritzen | Ian & Bonnie Mathie | Katja Otting |
| Terry & Kathryn Hodson | Ed & Wendy Laverock | David & Maureen Mathieson | Joseph & Urania Pacheco |
| Arne Hoiberg | John Lawrence | Kenichi & Reiko Matsuo | Donna Parker |
| Doug & Ruth Homan | Richard & Patricia Lawrence | Irene Maule | Bill Parker |
| Dr. Pamela Hoodless | Pamela M. Leang | Peter & Gerry Maw | Dr. Edward & Marlene Penner |
| Robert & Cathy Hoogerbrug | Don & Carol LeDrew | Mary McArthur | Mike Pereira |
| Richard & Kate Hoos | Rachel Lee & Daniel Liu | Charles McComb | Derek Patterson & Carolyn Converse |
| Lorraine Houston | Peggy Lee | Linda McEvoy | John Peterson |
| Jennifer Hsiao-Hui Hsu | Spencer & Christine Lee | Brian & Beth McGill | Lois C. Phillips |
| Fanny Huang | Sheana Lehigh | Hugh & Pam McKinnon | James Phillipson |
| Fred & Sandra Hubbick | Terry Lemieux | Michael McRae | Holger Pierce |
| Randy & Donna Hundt | Gabriele LeMond | Audrey Meek | Patricia Piket |
| IX Solutions Ltd. | Lucille Lewis | Nishi Mehra | Barbara Pinkiewicz |
| Susan Jackson | Jian Jun Li | Beverley Mellenger | Robert Pohn |
| Alfred Janssen | Xu Lan Li | Patricia Mencke | Merna Pope |
| Jean Jarrett | Hongyan Li | Melissa Meng | Drs. Klaas & Joanne Post |
| Alvin & Helen Jasper | Mark & Theresa Libster | Andy & Diana Mernett | Adrian & Colleen Post |
| Zhanliang James Ji | Robin Llich | Elaine Merrell | Gail Poston |
| Rob & Lorna Johnson | Ken Liddiard | Terrence Metcalfe | Jairo Prada & Cristina Arango |
| Don C. Jones & Marilyn Buchannon | Roberto & Annie Lim | Dave Mihalech | Joan Pretty |
| Dr. Michal & Barbara Kaburda | Tim & Sharon Little | Evelyn Mitchell | Dr. Jeff & Carol Purkis |
| Jeremy & Laura Kalenuik | Ying Liu | P. M. Mizen | Wayne & Denise Quanson |
| Howard & Kim Karras | Jie Liu | Olive Moffett | Glenn & Louise Rabuka |
| Dalwinder Singh & Jashan Kaur | Leona Lone | Osman Mohamed | Nelmida Rafael |
| Balden Kehal | Lin Lou | Carla Montalto | Diana Ramsey |
| Stephanie Kemick | Dwayne Love | Jim Moore | Dorothy Randall |
| Sean Kenny & Mandi Thompson | Frank & Marilyn Lung | Des Moore | Tajinder Rangi |
| Margaret Kerr | Ronald Lunggren | Judy Mullin | Kenneth Rattray & Joanne Rattray-Seip |
| Veena Khanna | Heather Ma | Steve Murray | Karunakaran Ravikumar |
| Khosa Ventures Ltd. | William & Arlene MacAdams | Chris Myring | Marion Reid |
| Lothar & Maureen Kiner | Clifford & Veronica MacDonald | Vishwa Nagpaul | Peter & Susan Reimer |
| Joan Kloss | Dave MacDonald & Taryn Boivin | Karen Neal | Randy Ren |
| Robert Knott | Jack MacDougall | Eileen Nehra | Barbara Richards |
| Kristina Knowles | Esme MacFarland | Khanh Gia & Nga Nguyen | Tasia Richards |
| Young Hee Ahn Ko | Beverley Macham | Thang Nguyen | Patricia Richmond |
| Brett Kohli | June MacLean | Ian Nichols | Darin Riedel |
| Jutta Koloska | Patricia MacNaughton | Alan Nicholson & Kelcey Shirley | Muriel J. Roberts |
| Dr. Ed Kostashuk & Dr. Mary Chu | Colin MacRae & Barbara Cole | Christine Nicol | Carol Roberts |
| Dr. Natalie Kowalewich | Lisa Mahboubi | Marc & Georgia Nord | Keith Robinson |
| Eleanor Krall | Valerie Malik | Trevor & Mena Norris | Verona Rosic |
| Gerald J. & Helen Kristoff | Mahesh Malik | Deryk & Linda Norton | |
| | Carol Malmas | April Nystedt | |

| | | | |
|-----------------------------------------------|----------------------------------------|-------------------------------------------------|------------------------------|
| Chris & Dorothy Roulson | John Szanto | Peter Winford | Sandee Butterley |
| Roger & Geraldine Roy | Joseph Tai | Bert Wolfe | William Campbell |
| Sugandh Saluja | Nirmal Takhar | Yu Yan Wong | Therese Campbell |
| Margaret Sampson | Raymond Huang & Susan S. Tan | Solomon Wong | Dr. Edward Chang |
| A. Lorne Sampson | Hong Yang Tan | Woo Barbecue House Inc. | Phil Crosby-Jones |
| Anupinder Samra | Rupinder Thandi | David Wood | Monica Dahl |
| Karen & Lionel Sanders | M.H. Thomas Family Fund | Ella Woodman | Don Davison |
| Lukhdeep Sandhu | Allan & Patricia Thomson | Hanako Woodward | Ottlie Deasley |
| Toshiko Sasaki | Stewart & Karen Tiessen | Bruce Woolley | Neil Dennis |
| Jenna-Lee Schimpf | Aarne & Anne Tork | Brenda Worden | John Dicken |
| Ken & Sandra Schrag | David & Karen Tunnicliffe | Wayne Worobec | Annie Dolny |
| Robert & Gail Schumann | Bhupinder Ughra | Geselle Worobetz | Dr. Heathcliff D'Sa |
| Ken Scoten | Randy Unger | Mary Louise Wright | Anne Friendly |
| Keith Scott | WRYCC Sunday Chess Club | Belinda Wu | Dr. Quinn Gentles |
| Dr. Jerry & Trina Scott | van Baer-Szun Charity | Yonggong Xia | Donald Grant |
| William & Maureen Sedler | Dr. Peter N. Van Den Bosch | Flora Xiang | Saroop Grewal |
| Gary Seedhouse | John & Toni Van Koll | Kun Xiao | Joan & Norman Hawker |
| Kevin & Nicole Seger | Theodore Van Overbeek & Yasmin Colberg | Yuping Xiong | Peter Hayles |
| Maritta Seiler | Melis & Elsbeth Vandenaeker | Lixiu Xu | Len Hazzard |
| Daniel Sewell | Paul Vander | Ying Xu | Ruth Homan |
| Dr. Zheng John Shen | Gary & Monica Vaughan | Mike Yaciw | Jason Kirstein |
| Sharon Shilliday | Vela Wealth Management Inc. | Gordon Yamashita | Samuel Koltai |
| Yin Shui | Marjorie Vernon | Yamato Properties LLC | Spenser Koltai |
| Anastacio Sideco | Sukhvir Vishram | Tie Ying Yang | Ron Kunstman |
| Sharon Sidhu Personal Real Estate Corporation | Ralph Volkens | Man Sen & Shirley Yong | Dr. Herman Kwan |
| Gurjit Singh | Yasmin Wadia | Hyerin Yoo | Erma Lange |
| Ajit Pal Singh | Bill & Sharon Wallace | David & Aileen York | Diana Law |
| Merv & Lynn Sliz | Charles & Lila Walsh | Dr. Kerry & Kate Yoshitomi | Caterina Lazzara |
| Linda Smith | Margarethe Wardel | Kaiwen You | Dr. Martin Lebl |
| Martin Smith | John & Marni Warren | Charlie R. Young | Spencer Lee |
| Carole A. Smith | Paulene Waterman | Huai & Mia Yu | Doreen Leishman |
| Donald & Barbara Smith | Janette Watson | Chamcheong Yuen | Terrance Vincent Maisonville |
| Dennis & Janice Smith | Audrey Watson | George Zambus | Daniel Manulak |
| Craig & Donna Lee Smith | Linda Weafer | Zigang Zhang | Jim & Iris McFarland |
| Val Smith | Kent & Katherine Webster | Dong Zhang & Carol Cao | Barry McGill |
| Henry & Janina Sovio | Ray & Yolande Wechselberger | Qing Jessica Zhao | Lynne Ogilvie |
| Michael & Yukiko Spencer | Norbert & Judy Weinkauff | Qing Zhao | Dr. Med Orfaly |
| James St. Cyr | Verne & Bonnie Westover | Hua & Jun Zheng | Peter Parsons |
| Sandra Staudt | Heather Westre | Hao Zheng & Jun Yun Zheng | Fred Pohn |
| Stayte Rd. Barbers | Sid White | Cherie Ziola | Dr. Klaas Post |
| Elizabeth Stephen | Sandra White | Tributes & In Appreciation Honourees | Dr. Bryan Prentice |
| Jim Stonehouse | White Rock Ocean Team | Lashkar & Joginder Bains | Dr. Alan Pretty |
| Janis Stretch | Gwen Wick | Paul Bennett | Bonnie Rothe |
| Herman Streu | Mollie Williams | Rod Booth | Doug Sampson |
| Joan Strick | Michael Williams | Roberta Braddock | Norm Szun |
| Sunnyside Elementary School | Patrick & Janet Williams | Ingo Brinkert | Marcie Unger |
| Cecilia Svenshek | Gladys Willmer | Adrian Broddle | Marni Warren |
| Evelyn Sy | Aleah Willms | Gerlando Bruno | Kent Webster |
| Andrew Syme | Brian & Marion Wilson | Dr. Vic Bubbar | Yun Woo Wong |



PEACE ARCH
HOSPITAL +
COMMUNITY HEALTH
FOUNDATION

YOUTH
IN
Action
PEACE ARCH HOSPITAL + COMMUNITY HEALTH FOUNDATION

Walk the Rock is back on June 7, 2026!

Join us in Memorial Park at White Rock Beach on June 7, 2026 for Walk the Rock! This family-fun event will feature fair activities, raffles, food trucks, and more. The entire celebration is planned and executed by the Foundation's Youth in Action program, a group of grade 10-12 students who are passionate about making a difference in their community. All proceeds collected at the event will benefit a new ICU and Cardiac Monitoring Unit at Peace Arch Hospital!



JUNE 7, 2026
12PM - 5PM



MEMORIAL PARK
AT WHITE ROCK BEACH

Bring your family down and enjoy a day in the sun, all while supporting your local hospital

LEARN MORE and stay up to date on this event at pahfoundation.ca/events/walktherock

Are you a grade 10-12 student in White Rock/South Surrey looking to make an impact on your community? Youth in Action is the program for you, where you'll take part in a variety of volunteer experiences and healthy lifestyle activities, while learning how to organize, plan, and execute a fundraising event.

The deadline to apply is **May 31, 2026**. Apply now at pahfoundation.ca/youth



SAVE
the
DATE

