



2019

REPORT TO DONORS

# The Impact of Your Donations

The donations you provide ensure the excellent healthcare in our community remains in our community.



PEACE ARCH  
HOSPITAL  
FOUNDATION

# Introducing Peace Arch Hospital Foundation Lodge



**We are pleased to announce that Peace Arch Hospital Foundation Lodge — a brand new, state-of-the-art long-term care facility, is nearing the final stages of construction.**

Located across the street from Peace Arch Hospital, the facility will feature the George and Sylvia Melville Hospice Home, a secure wing for patients with geriatric mental health conditions, and 112 private bedrooms in a home-like environment with bariatric support.

This new site features significant improvements for residents, patients, staff, and guests alike, greatly contributing to the ongoing need for long-term care facilities in our aging community.

Clinical Services Manager Kashmiro Kainth is very excited about the new site. She anticipates many upgrades to come including private rooms with an ensuite bathroom for each resident, new beds, ceiling lifts, enhanced Telecare communications, an on-site sacred space, dedicated rehabilitation

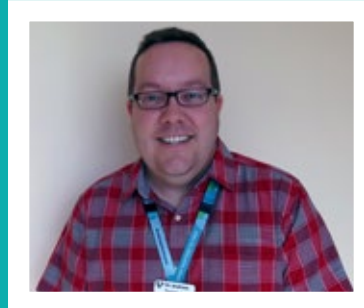
rooms, bariatric facilities, and even an on-site production kitchen to prepare fresh meals.

“The Lodge will allow residents to enjoy the comforts of home and surrounding residential neighborhood, and continue to provide clinical services like Recreational Therapy, Occupational Therapy and Social Work,” said Resident Care Coordinator Heidi Cumberworth.

Kainth added that ample outdoor spaces and new furnishings for family members to stay the night will encourage residents to continue to socialize and maintain relationships with their loved ones. We very much look forward to welcoming Peace Arch Hospital Foundation Lodge to our growing community.

“Assisting patients who face a life-limiting illness can be challenging, particularly as we may not have hospice beds in White Rock. Thanks to the generous contributions of our donors, we have increased our hospice beds and should no longer have to ask patients to leave their home community. Each contribution has made it possible for patients to spend their remaining time with loved ones in White Rock. Words cannot express my gratitude to everyone who contributed.”

**— DR. ANDREW COLLINS,  
PALLIATIVE CARE PHYSICIAN**



# Investing in Better Care



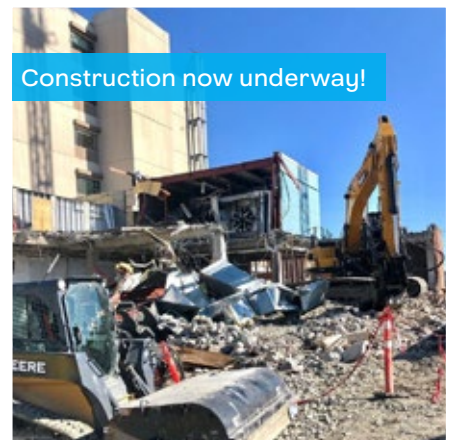
For more than 70 years, Peace Arch Hospital Auxiliary Society members have volunteered their time and efforts to help our community hospital, raising funds for equipment and bringing smiles to patients and Extended Care residents alike. This year, members have had an increasing desire to make larger, long-lasting commitments.

With their Superfluity Thrift Shop, Hospital Gift Shop, golf tournaments, luncheons and other events, the Auxiliary's ability to raise and distribute funds has increased exponentially over the years. Finding inspiration in the testimony of our local doctors and patients, the Auxiliary committed to use these additional funds to support much-needed capital projects.

Following a substantial legacy donation from member and donor Mimi Chan, the Auxiliary has pledged another \$1.5

million to Peace Arch Hospital Foundation, to support the five new operating suites. This is the second \$1.5 million gift from this passionate group of fundraisers, with the first coming in 2015 for the ER expansion.

"OR upgrades have been needed for many years," said Auxiliary President, Lynne Quigley. "This expansion will help to alleviate the existing pain, anguish and waiting times that many OR patients continue to face."



Construction now underway!

## DID YOU KNOW?

The new OR will feature a surgical suite with intelligent technology for Cataract Surgery, allowing for safer and more efficient procedures of removing cataracts!

With these contributions and more, White Rock and South Surrey residents can rest easy knowing that excellent healthcare is here to stay in our community.



# Grateful Donor



## Donor John Charpentier is grateful his dad has Weatherby Pavilion to call home

Maurice Charpentier is Weatherby Pavilion's longest resident, having moved into the care facility on February 28, 2014. His son, John, drives up from the Seattle area to see him every week, and is thankful his dad receives such great care.

"My parents donated to Peace Arch every year and when I took over their finances, I kept up the donations. It's now been 27 years that our family has been a proud supporter."

John's dad, who suffers from Alzheimer's, doesn't speak much but after some time spent in the facility's

multi-sensory Snoezelen room, had a conversation which thrilled his son.

"My dad is at the point of only giving yes and no answers but the Snoezelen room really helped his communication and he had a conversation, which hasn't been possible for quite a while. I was stunned when the nurse told me."

With the brand new Peace Arch Hospital Foundation Lodge being built across the street, all Weatherby patients will transition over to the new unit in early 2020. John hopes his dad gets the chance to make the move.

"I want my dad to move into the new building. I'd like him to experience it while he's still here. Everyone at Weatherby has been so good to him and I can't thank them enough for taking care of him these last five years."

— JOHN CHARPENTIER

# Operating Suites Closer to Becoming a Reality

Sixty thousand people come through the doors of our ER every year. Over half of those ER patients need surgery of some kind, in addition to in- and out-patient scheduled surgeries and emergency maternity needs.

To address this pressing need, we must build five new surgical suites, and a procedure room for ophthalmology and smaller surgeries, to be ready when the new ER opens in 2021.

This past year, our donors have truly risen to the challenge and shown this community their support of increased surgical capacity at our local hospital.

Of the \$29 million estimated cost of the project, the Foundation has committed to funding \$22 million, including \$12 million from a public fundraising campaign.

Thanks to donors like you — community members who believe strongly in making a difference in healthcare — we are pleased to announce that \$9.2 million towards the \$12 million goal has been successfully raised to date!

This is enormously positive and will have a tremendous impact on reducing wait times and increasing the number of people in White Rock and South Surrey who will be able to have their much needed surgeries close to home.

Thank you from the bottom of our hearts to every single one of you who has contributed towards making the new Operating Suites a possibility for our community. Donors like you make all the difference.

Ongoing this fall is a Construction Industry Campaign hoping to raise \$1 million towards the Operating Suites campaign. This effort is being spearheaded by Grant Turnbull (Turnbull Construction Project Managers), Jeff Musialek (Smith Bros & Wilson) and Tyler Pasquill (Ventana Construction). We are thrilled to announce more than \$250,000 has been raised so far through this initiative!

## THE INVESTMENT IS GREAT

We're not just building to meet our current needs; we are ensuring that we can accommodate both future surgical demands, as well as advancements in surgical techniques and technologies.

If you live in South Surrey/White Rock, it's just a matter of time before you, a member of your family, or a friend, will come through the doors of Peace Arch Hospital in need of immediate care. Your generous support ensures that Peace Arch Hospital can be ready with the best, most efficient facilities possible. ***Thank you!***

## OUR OR CAMPAIGN LEADERSHIP TEAM

Assisting us with the fundraising is this group of 30 incredible and committed volunteers. We are so grateful for their generous support:

Grant Turnbull (Co-Chair)  
Harp Hoonjan (Co-Chair)  
Gordon Barefoot  
Larry Berg  
Bob Bezubiak  
Marco Buccini  
Colin Cameron  
Ray Chen  
Sandra Christian  
David Chua  
Sophia Chua  
Jim Dales  
Pete Donaldson  
Brock Dorward  
Rob Feenie  
Mike Fong  
Judy Freeman  
Dr. Heinz Gunter  
John Hitchcock  
Dr. Herman Kwan  
Ravi Mann  
Jeff Musialek  
Tyler Pasquill  
Lucky Randhawa  
James Randhawa  
Dragana Sanderson  
Catherine Simpson  
Dr. Arno Smit  
Norman Stowe  
Jimmy Wang



# ER Ground Breaking Event



Thank you so much to our donors, volunteers, community members and friends who celebrated the official ground breaking of the ER/OR construction with us on March 13, 2019!



We are very pleased to announce that the construction has begun on site and we will continue to report on progress of the building phase until the anticipated opening in 2021.

This eagerly awaited project will see a new Emergency Department with 50 treatment spaces -- double the current capacity. With three care zones, larger trauma and resuscitation space, increased

pediatric treatment areas and specialty rooms for casts, sutures, gynecology, EENT, as well as a Mental Health & Substance Use Zone, the new ER will truly serve the needs of our growing community for many years to come.

The Operating Suites fundraising campaign continues to gain momentum with \$9.2 raised of \$12 million needed, which will bring five

new state-of-the-art surgical suites and an ophthalmology procedure room, built on top of the new Emergency Department. This project is forecast to reduce wait times in our community.

Thanks to you, the projects have officially broken ground and will significantly improve health care for our residents, friends and family. Thank you for celebrating this monumental event with us!

# Giving with Stocks

Giving with securities just makes sense...here's why:

1

You pay **NO TAX** on the capital gains when you gift appreciated securities and you receive a **TAX RECEIPT** for the full fair market value of the securities gifted

2

Alternatively, when you gift depreciated securities you can **REALIZE A TAX LOSS** that can be used to offset past and future capital gains

3

You may also make the gift of **PUBLICLY TRADED SECURITIES** as part of your will planning with your estate receiving the same **TAX BENEFITS**.

**FOR MORE INFORMATION ABOUT GIFTING SECURITIES, PLEASE CONTACT BARBARA MOORE AT 604.535.4520 OR [barbara@pahfoundation.ca](mailto:barbara@pahfoundation.ca)**

“For several years now I’ve been donating shares, including common stocks and mutual funds, to my favorite charities from my small personal account, and it’s a breeze. And best of all, there are no calculations required. No capital gains calculations, and no calculations of the dreaded adjusted-cost-base. I’ve now discovered that my financial advisor will make similar donations from the account that she manages. At no charge to anyone. I simply request the dollar amount to be donated and the recipient charity, and it’s done. And best of all, it gives me great pleasure to donate to my hospital, with the knowledge that I am contributing to the care and welfare of others in a meaningful way.”

— DR. BARBARA OLSON, DONOR

# With the help of our donors, we purchased...

## **BLOOD GAS ANALYZER — LABORATORY, \$4,600**

One of the most important pieces of equipment in the lab is the Blood Gas Analyzer. It's used to test blood to evaluate things such as electrolyte levels, oxygen saturation, glucose, and hemoglobin. It is essential in determining the course of treatment for critically ill patients that come to the Emergency as it provides a quick overall assessment of health. It's also used for a very important test, conducted prior to surgery, particularly in patients that have breathing issues or lung disease. It will evaluate how well the lungs can move oxygen into the blood, and carbon dioxide out. In some instances, patients in the ER and Intensive Care may have their blood evaluated numerous times a day!



## **25 STRYKER SPIRIT SELECT BEDS — WEATHERBY & AL HOGG PAVILIONS, \$125,000**

The complex adjustable Stryker Beds are fundamental in providing care to our elderly patients, especially those with mobility issues. Getting in and out of bed can be a challenge for many reasons, and the adjustability and special features of these beds ensure that the residents can start and end their day safely, in line with their physical limitations.

## **FOUR HOLTER MONITORS — CARDIOLOGY, \$9,600**

A Holter Monitor is a battery-operated portable device that measures and records heart activity. It is the size of a small camera and has circular electrodes that attach to your skin. You may be asked to wear one for 24-48 hours if you have a slow, fast, or irregular heartbeat. The results will help your doctor determine what further actions, if any, are needed.





**Through your kind generosity, we have purchased critically-needed equipment for the hospital.**

### **THREE PORTABLE VITAL SIGN MONITORS — EMERGENCY, \$13,800**

This small, yet mighty, piece of equipment is priceless to ER staff. Vital Sign Monitors are used to evaluate pulse, blood pressure, temperature, and the amount of oxygen in the blood, allowing staff to monitor your health and determine appropriate treatment.



### **SARA PLUS MOBILE LIFT — GENERAL REHABILITATION, \$4,500**

While the Sara Plus Mobile Lift was originally purchased for the General Rehabilitation Unit, it has been shared among the different departments as a useful tool for transferring patients though a full lift, or simply assisting them from a sitting to standing position. Not only is this safer for the staff, but it allows the patient to be positioned in a way that they feel more secure and confident with their body mechanics, allowing them to progress in their rehabilitation plan.

### **VIDEO GASTROSCOPE — SURGERY, \$35,000**

A Gastroscope is a long flexible plastic tube fitted with a camera and used to examine your food pipe, stomach, or small bowel. If you have been having symptoms such as indigestion or stomach discomfort, it could be used during a procedure called a gastroscopy to take a tissue sample, stop bleeding, or remove polyps.



# Ambassadors Circle

**PEACE ARCH HOSPITAL FOUNDATION** is honoured to celebrate the generosity of individuals, corporations and organizations who are our Ambassadors and give generously to advance our mission of enhancing Peace Arch Hospital and the health and wellness of our community. In recognition of their valued support we invite all donors that have given \$100,00 or more in their lifetime or \$10,000 in a year to be members of our Ambassadors Circle. Their spirit of giving back makes an impact on having a premium health care centre for everyone in our community.



Jack and Jane Aanen  
Todd and Debra Antifaev  
Gordon and Cheryl Barefoot  
Larry & Sherrill Berg  
John and Gillian Bertamini  
\*Sheron L. Blewett  
Barbara Bourke  
Barbara Brown  
\*Graham and Darlene Cameron  
Dr. Bob and Kim Coles  
\*Bob and Carolyn Cooper  
Ellen deBruyn  
Raymond and Joanna Fang  
Stanley Geischen  
\*Werner and Helga Höing  
Faye Gougeon  
Helen Hadley  
David Hiscocks and Margaret Otte  
John Jans  
Marolyn Jow  
Ed and Joyce Kampschuur  
Marc Kampschuur  
Alice Kozier  
Brenda Krumhardt  
Leonard Leece  
\*Mary T. MacLeod  
Dr. Kulwinder Mann  
\*Dave and Rani Mann

Pauline Martin  
\*Hope Mavis  
\*Steve and Karen McDonald  
Gary and Anne McPhail  
\*George and Sylvia Melville  
\*John and Lillian Mitchell  
John Morrish  
Ralph and Bjorg Mothe  
Tony and Audrey Pease  
\*Art & Marjorie Reitmayer  
Douglas Renner  
Gordon and Linda Sangha  
\*Al & Wendy Schill  
\*Jollean Shallard  
\*Clark and Nancy Shewfelt  
Arie and Alice Trommel  
Grant and Michelle Turnbull  
\*Florence Wall  
\*Ivan and Eleanor Worthington-White  
Yan Zhang

For more information on becoming a member of our Ambassadors Circle please contact Barbara Moore at 604.535.4520 or [barbara@pahfoundation.ca](mailto:barbara@pahfoundation.ca).

## CORPORATIONS AND ORGANIZATIONS:

\*CIBC Wood Gundy, White Rock Branch  
Coast Fraser Enterprises Ltd.  
Landmark Premiere Properties  
\*Mr. & Mrs. P.A. Woodward's Foundation  
\*Pacific Arbour Five Residences  
Pacific Blue Cross Health Foundation  
\*Peace Arch Hospital Auxiliary Society  
\*RBC Foundation  
\*Rotary Club - Semiahmoo  
\*Royal Canadian Legion #8  
\*Surrey Fire Fighters Charitable Society  
TD Bank  
\*TB Vets Charitable Foundation  
Ventana Construction  
\*Westland Insurance  
\*White Rock Firefighters Charity Association

We would also like to thank all our Ambassadors that wish to remain anonymous.

*\*Lifetime Ambassador*

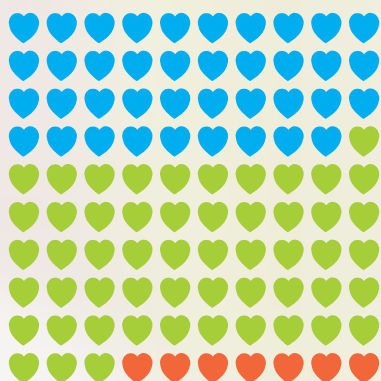
# 2018-19 FINANCIAL SUMMARY

**2018-19 Fundraising Revenue: \$13.3 M**

## 2018-19 Disbursement of Funds: \$4.9 M

Funds not disbursed in the year are held to fund upcoming projects, equipment and campaigns, as per the donor designated purpose. To view our audited financial statements, or for more information, please visit [pahfoundation.ca/financials](http://pahfoundation.ca/financials) or call us at 604.535.4520

### Sources of fundraising revenue:

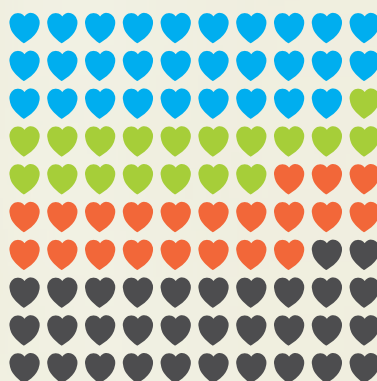


**49%** Estate gifts

**44%** Individuals, corporations and community service groups

**7%** Events

### Funds designated for:



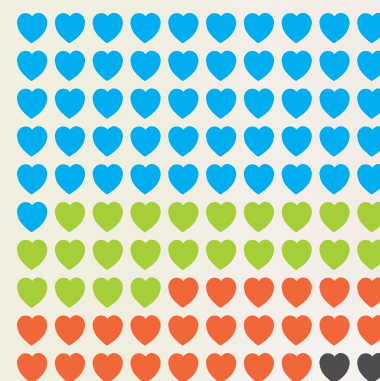
**29%** Area of greatest need

**18%** Emergency department

**21%** Operating Suites

**32%** Other restricted funds

### Disbursements designated for:



**51%** Emergency Department

**23%** Peace Arch Hospital Medical Equipment

**24%** Healthy Community Grants + Projects

**2%** Peace Arch Hospital Grants/Other Programs





# Thank you!

Your dedication to enhancing the health and wellness of our community has truly made an impact in the lives of the patients and families who visit our hospital every day.



PEACE ARCH  
HOSPITAL  
FOUNDATION

15521 Russell Avenue, White Rock, BC V4B 2R4 T 604.535.4520

  [peacearchfoundation](https://www.facebook.com/peacearchfoundation)  [pahfoundation](https://twitter.com/pahfoundation) [pahfoundation.ca](https://www.pahfoundation.ca)